

# Technical data sheet



Product features

## Electric grill water direct 31x48 without cabinet 230 V

<b>Model</b>	<b>SAP Code</b>	00010039
--------------	-----------------	----------



– Removable rim: Yes

<b>SAP Code</b>	00010039	<b>Net Weight [kg]</b>	13.50
<b>Net Width [mm]</b>	330	<b>Power electric [kW]</b>	3.300
<b>Net Depth [mm]</b>	630	<b>Loading</b>	230 V / 1N - 50 Hz
<b>Net Height [mm]</b>	450		

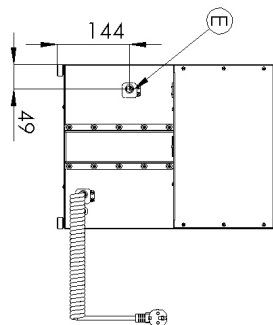
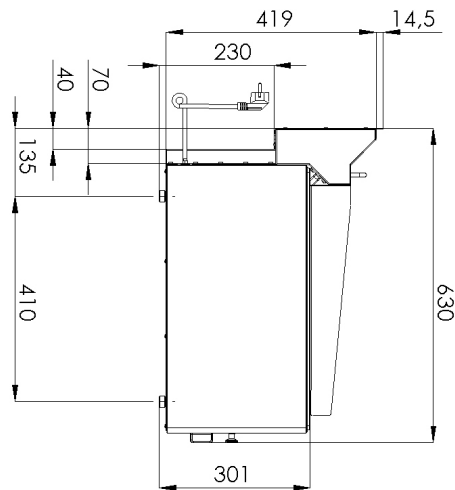
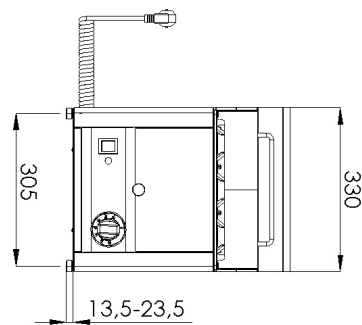
# Technical data sheet



Technical drawing

Electric grill water direct 31x48 without cabinet 230 V

Model	SAP Code	00010039
-------	----------	----------



# Technical data sheet



## Product benefits

### Electric grill water direct 31x48 without cabinet 230 V

Model

SAP Code

00010039

1

#### All-stainless design

long life  
resistance of AISI 304 stainless steel material  
the material does not cut

- savings on service interventions
- easy cleaning and maintenance of equipment

2

#### Degree of protection of the control elements IPX4

maintenance-free system  
resistance to splash water  
long life

- savings on service interventions
- easy cleaning and maintenance of equipment

3

#### Special shape of the grates

ensures that the oil drips directly into the water bath  
instead of onto the heater

- the heater is not destroyed
- easy cleaning and maintenance of the equipment
- safety

4

#### High detachable hem

better hygienic conditions  
preventing grease from splashing onto  
ancillary equipment

- easy maintenance
- easy cleaning

5

#### Removable water container

easy cleaning from food residues  
removes fat burning and thus carcinogenic substances

- no wear and tear on the grill and easy cleaning

# Technical data sheet



## Technical parameters

### Electric grill water direct 31x48 without cabinet 230 V

<b>Model</b>	<b>SAP Code</b>	00010039
--------------	-----------------	----------

**1. SAP Code:**

00010039

**2. Net Width [mm]:**

330

**3. Net Depth [mm]:**

630

**4. Net Height [mm]:**

450

**5. Net Weight [kg]:**

13.50

**6. Gross Width [mm]:**

380

**7. Gross depth [mm]:**

665

**8. Gross Height [mm]:**

485

**9. Gross Weight [kg]:**

15.50

**10. Device type:**

Electric unit

**11. Construction type of device:**

Table top

**12. Power electric [kW]:**

3.300

**13. Loading:**

230 V / 1N - 50 Hz

**14. Protection of controls:**

IPX4

**15. Material:**

Stainless steel

**16. Indicators:**

operation and warm-up

**17. Device heating type:**

Direct

**18. Standard equipment for device:**

stainless steel scraper for cleaning

**19. Number of power control stages:**

6

**20. Grid material:**

Stainless steel

**21. Removable rim:**

Yes

**22. Grid shape:**

the grid made up of flat heaters allows food to be placed directly on it, the fat from the food flows under the heaters into the water bath